



**Surprising definition meets power!
A polyvalent 15" system with accurately designed components,
raising its performance to the maximum level.**

¡Potencia con una definición sorprendente!
La polivalencia de un sistema de 15" utilizando componentes cuidadosamente
diseñados para elevar las prestaciones al máximo exponente.

JK15A

15" TWO-WAY ACTIVE SPEAKER SYSTEM



Asymmetrical dispersion horn



Multiple PRESETS available

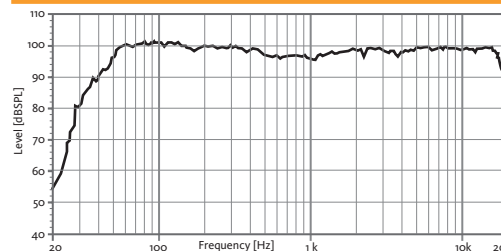


High resistant Polyurea® Paint

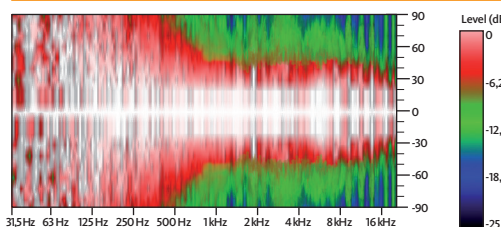
TECHNICAL FEATURES JK15A ACTIVE

Amplifier (program power)	600 + 100 W Class D Bi-amplified
Input sensitivity	8 dBu - 1.94 V
Input Impedance	20 kΩ Balanced
Maximum input level	20 dBu
Mains	Universal Switching Power Supply 85-265 V/45-65 Hz
Average current draw	0.7 A (Heavy duty musical program)
SPL (1 m)	127 dB continuous 130 dB peak
Built-in DSP	48 bit (including 7 factory presets)
AD/DA converters	24 bit - 48 kHz
Standby mode consumption	< 5 W
Adjustable Delay line	118 ms / 40 m
Frequency response (-10 dB)	45 Hz - 19 kHz
Components	LF-MF 15" woofer (3" voice coil) HF 1.75" PETP diaphragm Neodymium driver
Directivity (HxV)	50° to 100° x 55°
Weight	27.2 kg
Finish	Multilayer plywood Optimized front steel grille with foam High resistant bi-component black Polyurea coating

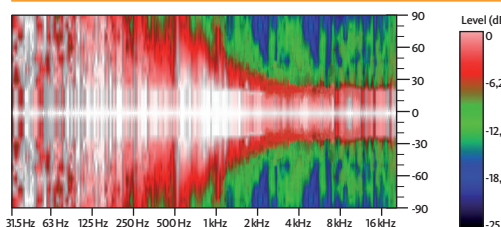
FREQUENCY RESPONSE 1W/1m (FLAT PRESET)



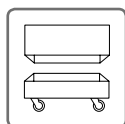
HORIZONTAL COVERAGE, 0°



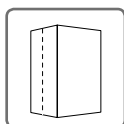
VERTICAL COVERAGE, 0°



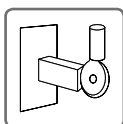
ACCESSORIES



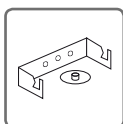
FC-JK15



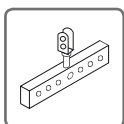
NC-JK15



SP-35



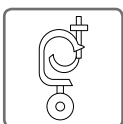
SP-15



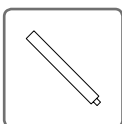
HR-1215



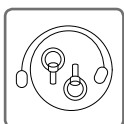
GT-50



GT-50HR



SP/CR



SC-15



ACR-M8