

JOKER

# JK18W2

18" 2000W  
SUBWOOFER

Joker



# JK18W2

Get ready to be surprised!  
A smart subwoofer design with 2000 W power handling  
will tune you in with the music.

# JK18W2

18" 2000W  
SUBWOOFER



Horn loaded  
BAND PASS  
design

## TECHNICAL FEATURES

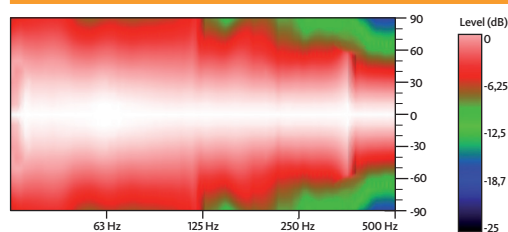
Power (musical program)	2000 W
Nominal Impedance	8 Ω
SPL (1 m)	99 dB (1 W), 132 dB continuous 135 dB peak
Frequency response (-10 dB)	34 Hz – 190 Hz*
Components LF	18" woofer (4" voice coil)
Directivity (HxV)	omnidirectional
Dimensions (HxWxD)	552 x 740 x 710 mm
Weight	47.8 kg
Finish	Multilayer plywood 1.5 mm optimized steel grille with foam High resistant bi-component black Polyurea® coating

\*LPF-12: LPF Xover 12 dB/oct available for passive-parallel use.

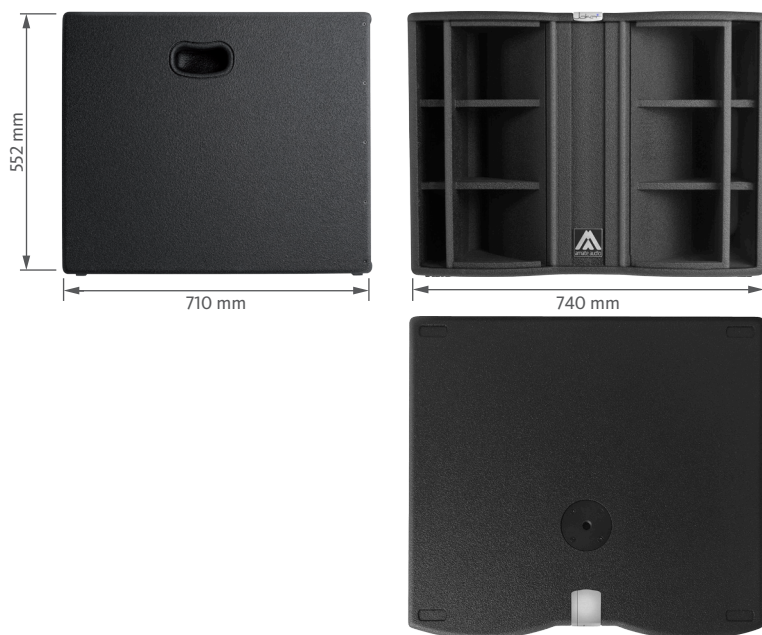
## FREQUENCY RESPONSE 1W/1m (LPF100+3 PRESET)\*\*



## HORIZONTAL & VERTICAL COVERAGE

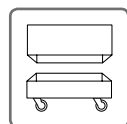


\*\*With an external Amate Audio DSP

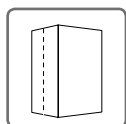


REAR VIEW

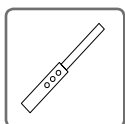
## ACCESSORIES



FC-JK18W



NC-JK18W



SP/CRTL



LPF-12