

JK26A

2x 6" TWO-WAY ACTIVE
SPEAKER SYSTEM

JOKER



**It's amazing! Says everyone who listens to the JK26A.
Ultra-compact design but yet a high performance
and unmatched sound quality.**

Todo el que escucha JK26A coincide: ¡Sorprendente!
Diseño ultra compacto que contrasta con un elevado rendimiento
y una calidad sonora sin fisuras.

JK26A

2x 6" TWO-WAY ACTIVE SPEAKER SYSTEM

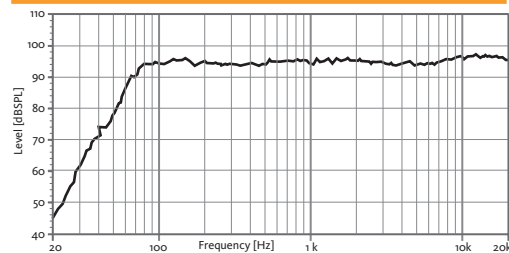


-  Carbon fiber cone
-  Light neodymium components
-  Multiple PRESETS available
-  High resistant Polyurea® Paint

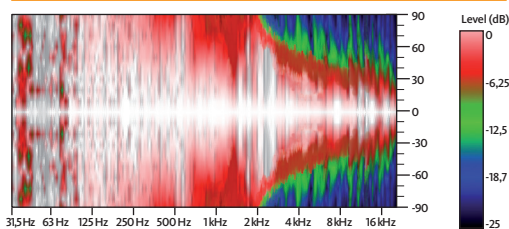
TECHNICAL FEATURES JK26A ACTIVE

Amplifier (program power)	200 + 30 W Class D Bi-amplified
Input sensitivity	2 dBu - 1 V
Input Impedance	20 kΩ Balanced
Maximum input level	20 dBu
Mains	Universal Switching Power Supply 85-265 V/45-65 Hz
Average current draw	0.3 A (Heavy duty musical program)
SPL (1 m)	118 dB continuous 121 dB peak
Built-in DSP	48 bit (including 5 factory presets)
AD/DA converters	24 bit - 48 kHz
Standby mode consumption	< 5 W
Adjustable Delay line	118 ms / 40 m
Frequency response (-10 dB)	65 Hz - 20 kHz
Components	LF-MF 2x 6" Neodymium woofers with carbon fiber cone (1.5" voice coil) HF 1" Neodymium Titanium diaphragm tweeter
Directivity (HxV)	90° x 90°
Weight	9.5 kg
Finish	Multilayer plywood Optimized front steel grille with foam High resistant bi-component black Polyurea coating

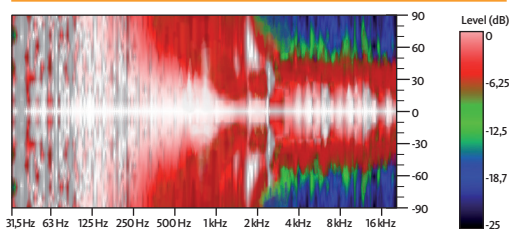
FREQUENCY RESPONSE 1W/1m (FLAT PRESET)



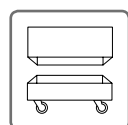
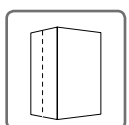
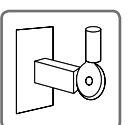
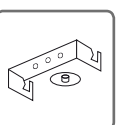
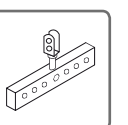

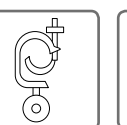
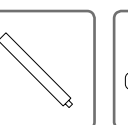
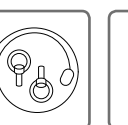

HORIZONTAL COVERAGE, 0°



VERTICAL COVERAGE, 0°



ACCESSORIES

-  FC-JK26
-  NC-JK26
-  SP-35
-  SP-26
-  HR-26
-  GT-50
-  GT-50HR
-  SP/CR
-  SC-15
-  ACR-M8