

LIGHT
NEODYMIUM
COMPONENTS



CARBON FIBER
CONE



DEDICATED CONTROL
PRESETS with external
Amate Audio DSP processors
& processing amplifiers



HIGH RESISTANCE
POLYUREA®
FINISH



EASY RIGGING &
INSTALLATION
ACCESSORIES

The most compact system in the NÍTID series. The 6" single woofer and 1" dome tweeter configuration is housed in an enclosure of minimal dimensions, enabling its application in all kinds of installations that demand the highest sound quality from a loudspeaker system with the most discreet possible form factor.

KEY FEATURES

TRANSDUCER TECHNOLOGY

Two-way full range passive speaker system comprising a direct radiating 1.5-inch voice coil, neodymium magnet 6" loudspeaker and a 1-inch voice coil diameter, phenolic diaphragm neodymium magnet tweeter.

POWER & CONTROL

200 W continuous musical program power handling.

An accurate internal passive crossover achieves optimum performance with high levels of protection for the high frequency driver.

Connectors mounted on an inclined recessed moulded connector plate for improved security and environmental protection.

Double Speakon NL4MP® (input & link).

Dedicated control presets available with Amate Audio LMS series DSP processors and TPD series processing amplifiers.

DESIGN & ACCESSORIES

Exclusive 1.5mm black mesh speaker grille with optimum perforation gradient and attractive appearance.

Multilayer birch plywood cabinet with Polyurea® coating, providing maximum robustness and strength for touring, events production, venue installation and other highly demanding applications.

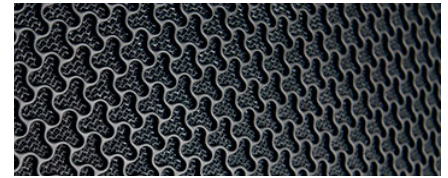
M8 rigging points for easy flying.

35mm diameter pole mount socket mounted on the bottom side, for a standard tripod.

TECHNICAL FEATURES

Power (musical program)	200 W
Power (r.m.s)	100 W
Nominal Impedance	8 Ω or 16 Ω available
SPL(1W/1m)	92 dB
Maximum SPL (continuous/1m)	115 dB
Maximum SPL (peak/1m)	118 dB
Crossover frequency	3k3 Hz
Frequency Response (-10dB)	64 Hz – 20 kHz
Components	LF - MF HF
	6" neodymium woofer with carbon fiber cone (1.5" voice coil) 1" phenolic diaphragm neodymium tweeter
Directivity (H x V)	70° x 70°
Directivity factor (Q)	12.6
Directivity Index (DI)	11 dB
Weight	5,4 kg
Finish	Multilayer baltic birch plywood with high resistant black Polyurea® coating
Dimensions (H x W x D)	370 x 220 x 226 mm
Grille	1.5 mm powder coated steel with black acoustic mesh
Rigging	M8 points
Connectors	1x Speakon NL4MP input / 1x Speakon NL4MP link
Available colors	Black and white

DISCOVER NÍTiD



UNIQUE DESIGN

Distinguishing details include the speaker grille, exclusively designed for an attractive appearance, maximum protection, and with **the best performance coefficient in the market, for improved sound quality**. The Polyurea® finish offers durable protection for the birch-ply cabinet. A wide range of accessories is provided for whatever your application is.



THE PERFECT BALANCE

NÍTiD series is the culmination of an intensive program of research, development and optimization, to achieve the greatest possible power and performance from the most compact sized cabinet. Every aspect of its form factor has resulted from examination and consideration of optimum acoustic response, ergonomics, construction and appearance.



TOP VIEW



BOTTOM VIEW



SIDE VIEW

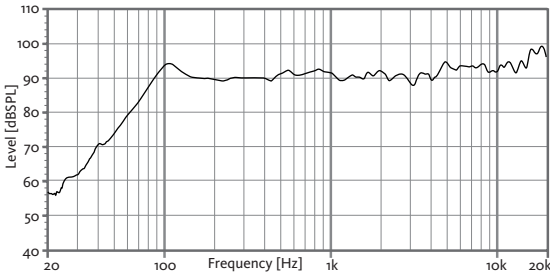


FRONT VIEW

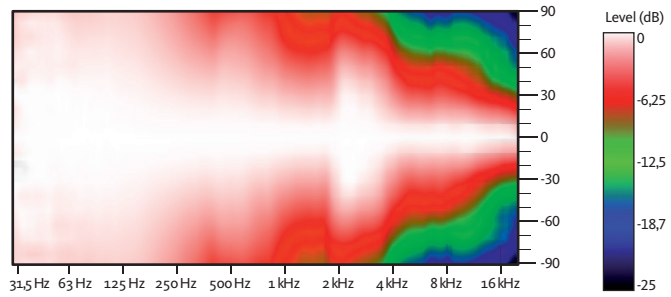


REAR VIEW

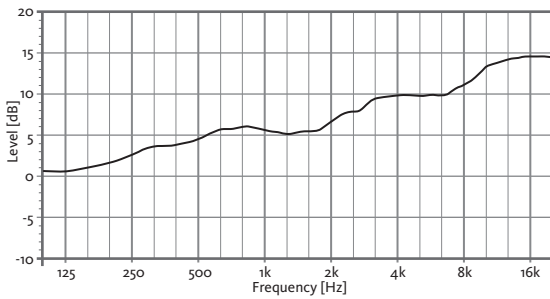
FREQUENCY RESPONSE 1w/1m



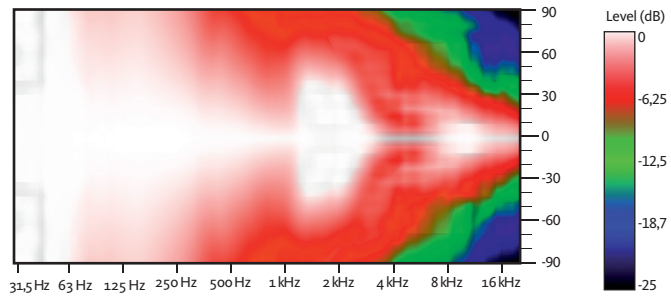
HORIZONTAL COVERAGE



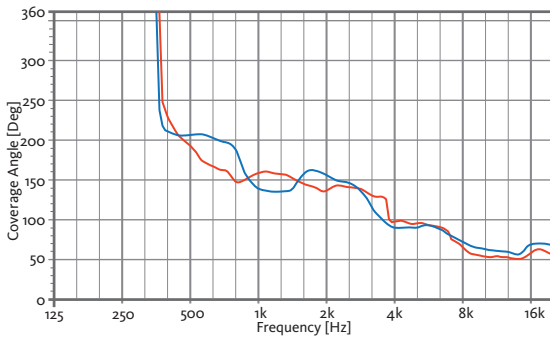
DIRECTIVITY INDEX (DI)



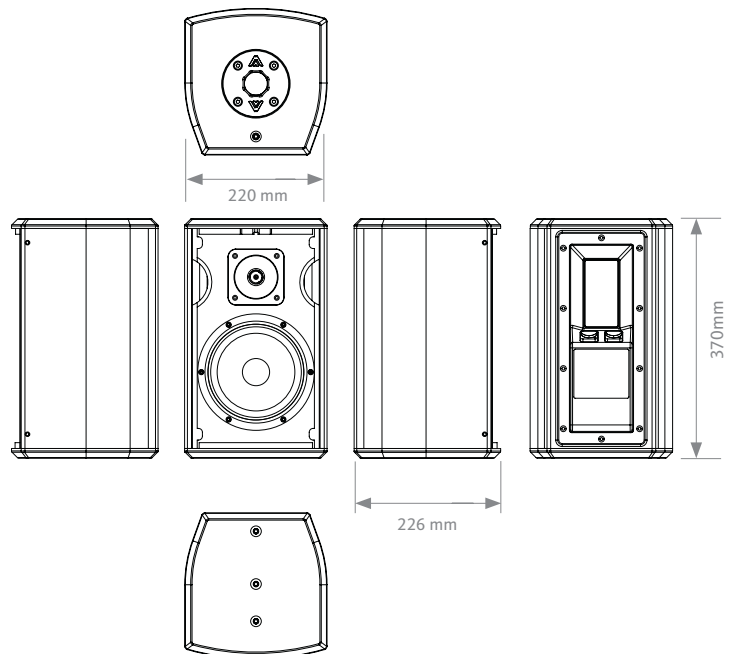
VERTICAL COVERAGE



HORIZONTAL & VERTICAL BEAMWIDTH (-6dB point)

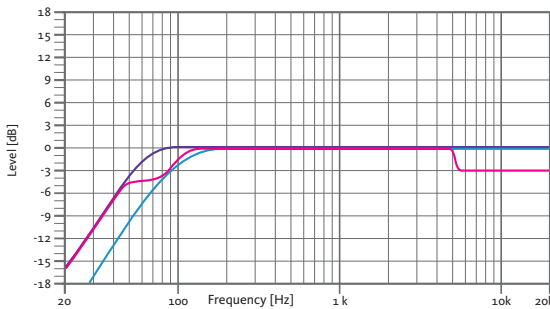


CAD DRAWING SCHEME



HORIZONTAL VERTICAL

RECOMMENDED PRESETS with external Amate Audio DSP



FLAT
Flat response

SPEECH
Vocal use

HPF90
HPF 90 Hz

RECOMMENDED CONFIGURATIONS

FOR S6P/8Ω (4 units)

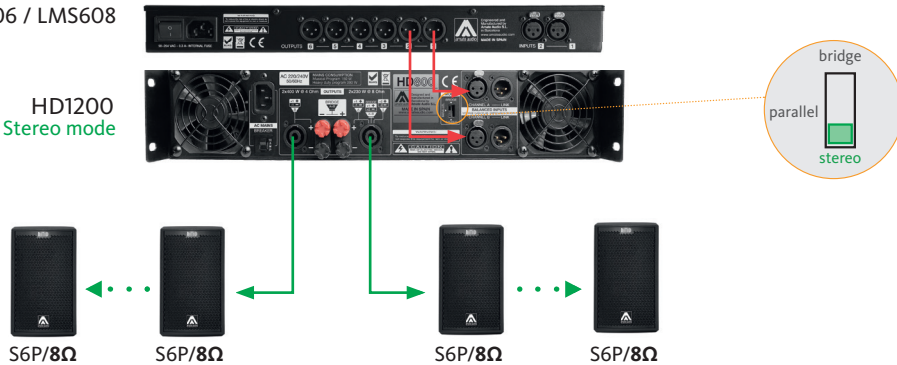
Connect the amplifier's output to the Speaker's input of the first cabinet. Then, make a bridge from the first cabinet to the second one. This configuration allows you to connect up to four cabinets to the same amplifier.

FOR S6P/16Ω

Connect the amplifier's output to the Speaker's input of the first cabinet. Then, make a bridge from the first cabinet to the second one and thus, sequentially. This configuration allows you to connect up to eight cabinets to the same amplifier.

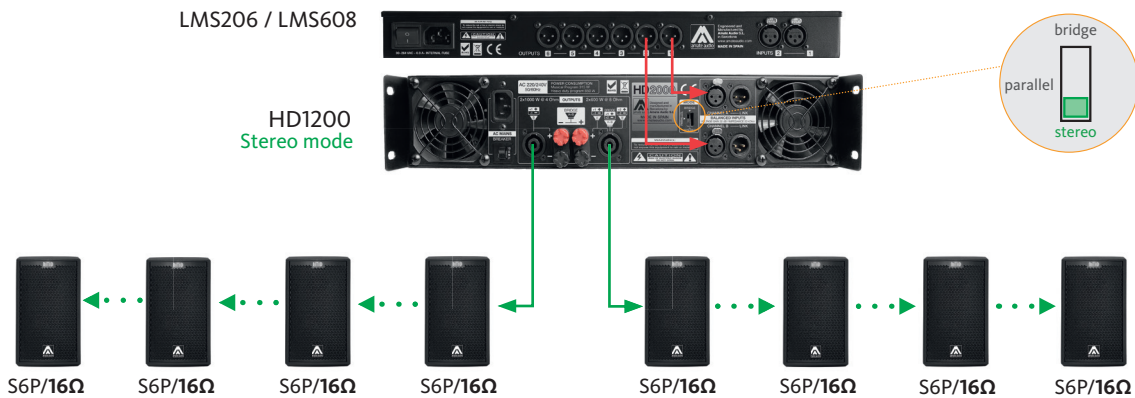
LMS206 / LMS608

HD1200
Stereo mode

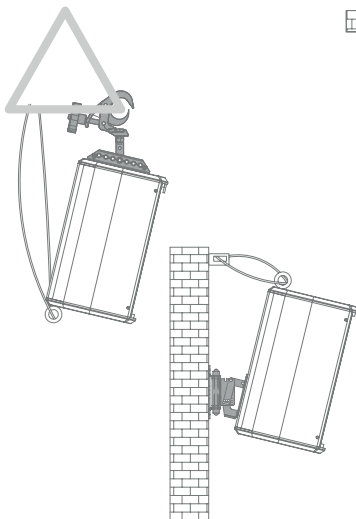


LMS206 / LMS608

HD1200
Stereo mode

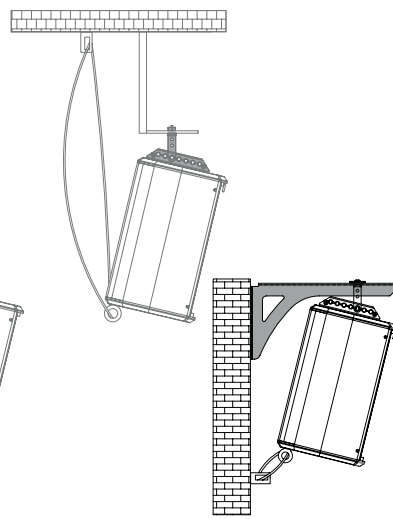


VERTICAL TRUSS-MOUNT
HR-S/GT + SC-15



VERTICAL WALL-MOUNT
SP-6N + SC-15

VERTICAL COLUMN-MOUNT
HR-S + SC-15



VERTICAL WALL-MOUNT
SP-WHR + SC-15

ACCESSORIES

FLYING BAR
HR-S



FLYING BAR WITH HOOK
HR-S/GT



TELESCOPIC DISTANCE ROD
SP-CRTL

ø: 35 mm
Length:
55 cm ~ 90 cm
Thread: M20



SAFETY SLING
SC-15



WALL MOUNT BRACKET
SP-6N



WALL-MOUNT BRACKET
SP-WHR

