

LIGHT NEODYMIUM  
COMPONENTS



CARBON FIBER  
CONE



MULTIPLE PRESETS  
AVAILABLE with external  
Amate Audio amplifier & DSP



HIGH RESISTANCE  
POLYUREA® PAINT



ACCESSORIES FOR  
EASY INSTALLATIONS

A new standard in high-fidelity, ultra-compact audio installation. 2x 6" custom design drivers deliver incredible sound quality and 121 dB continuous SPL, for power levels and signal coverage far in excess of its discrete dimensions.

## KEY FEATURES

### TRANSDUCERS TECHNOLOGY

Two-way full range passive speaker system composed by two direct radiating 1,5-inch voice coil, neodymium magnet 6" loudspeakers and one 1-inch voice coil diameter, titanium diaphragm neodymium magnet tweeter.

### POWER & CONTROL

400 W continuous power in musical program.

An accurate internal passive crossover achieves an optimum performance while including a protection on high frequency driver.

Connectors are placed on an inclined plane to effectively protect them against rain or moisture.

Double Speakon NL4MPR® (input & link).

Recommended presets available for DSP206, DSP608, LMS206 and TPD.

### DESIGN & ACCESSORIES

Ergonomic handle for an easy handling.

1,5mm speaker grille with black mesh, exclusively designed with an optimum perforation gradient and attractive appearance.

Multilayer birch plywood cabinet with Polyurea® coating, offering maximum reliability and strength for touring as well as for high demanding applications.

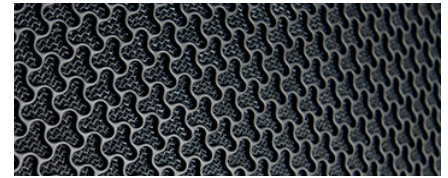
M8 rigging points for easy flying.

35mm diameter pole mount socket mounted on the bottom side, for a standard tripod.

## TECHNICAL FEATURES

Power (musical program)	400 W
Power (r.m.s)	200 W
Nominal Impedance	8 Ω or 16 Ω available
SPL(1W/1m)	95 dB
Maximum SPL (continuous/1m)	121 dB
Maximum SPL (peak/1m)	124 dB
Crossover frequency	4k Hz
Frequency Response (-10dB)	62 Hz – 20 kHz
Components	LF - MF HF
	2x 6" neodymium woofers with carbon fiber cone (1.5" voice coil) 1" titanium diaphragm neodymium tweeter
Directivity (H x V)	90° x 70°
Directivity factor (Q)	12.6
Directivity Index (DI)	11 dB
Weight	8.9 kg
Finish	Multilayer birch plywood with high resistant black Polyurea® coating
Dimensions (H x W x D)	534 x 250 x 258 mm
Grille	1.5 mm steel with black acoustic mesh
Rigging	M8 points
Connectors	1x Speakon NL4MPR input / 1x Speakon NL4MPR link
Available colors	Black and white

## DISCOVER NÍTiD



## UNIQUE DESIGN

Distinguishing details include the speaker grille, exclusively designed for an attractive appearance, maximum protection, and with **the best perforation coefficient in the market, for improved sound quality**. The Polyurea® finish offers durable protection for the birch-ply cabinet. A wide range of accessories is provided for whatever your application is.



## THE PERFECT BALANCE

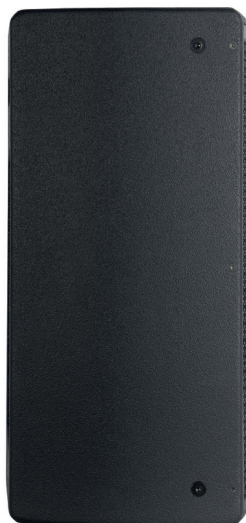
NÍTiD series is the culmination of an intensive program of research, development and optimization, to achieve the greatest possible power and performance from the most compact sized cabinet. Every aspect of its form factor has resulted from examination and consideration of optimum acoustic response, ergonomics, construction and appearance.



TOP VIEW



BOTTOM VIEW



SIDE VIEW

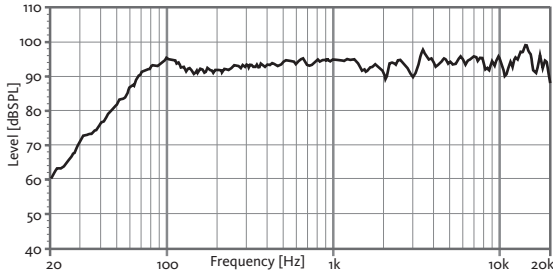


FRONT VIEW

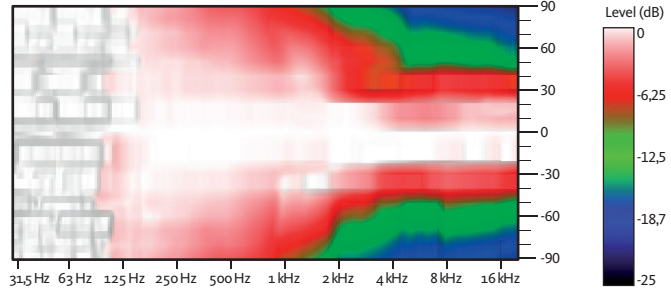


REAR VIEW

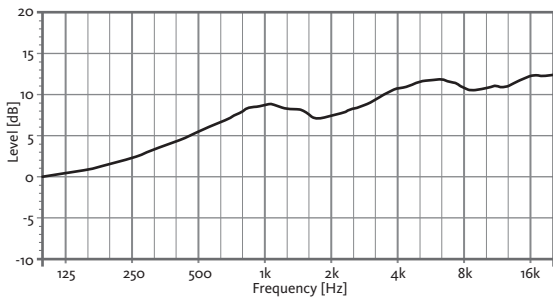
### FREQUENCY RESPONSE 1W/1m



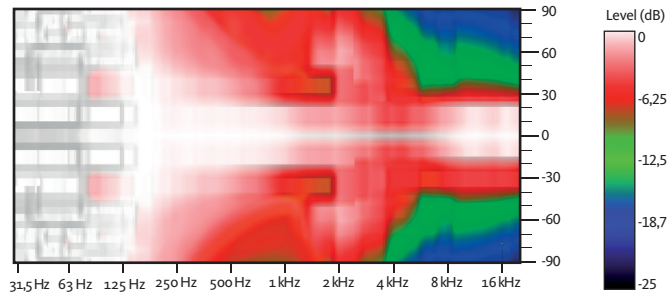
### HORIZONTAL COVERAGE



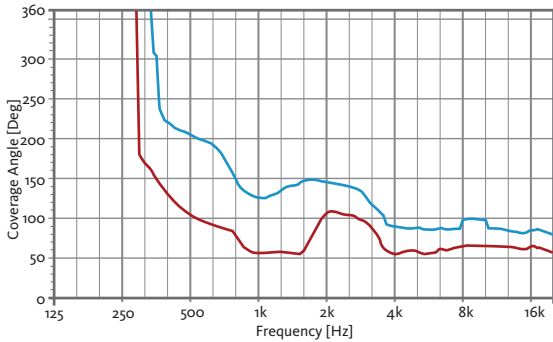
### DIRECTIVITY INDEX (DI)



### VERTICAL COVERAGE

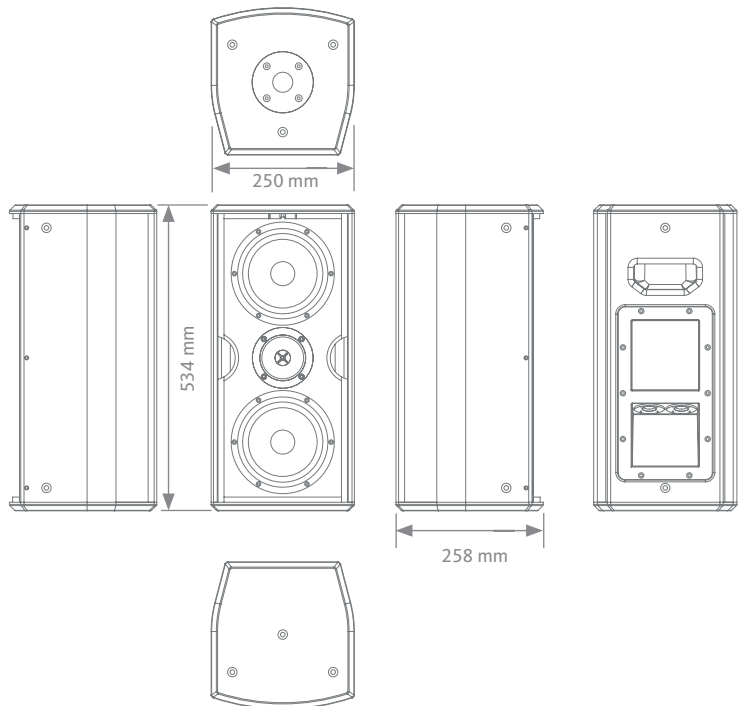


### HORIZONTAL & VERTICAL BEAMWIDTH (-6dB point)

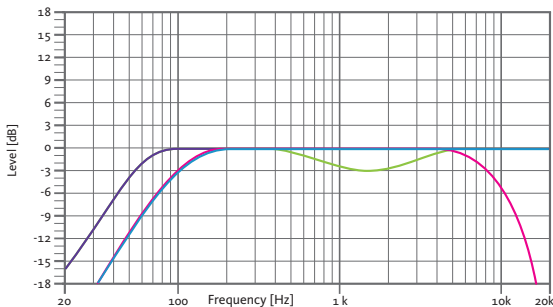


HORIZONTAL VERTICAL

### CAD DRAWING SCHEME



### RECOMMENDED PRESETS with external Amate Audio DSP



**FLAT**

Flat response

**NEARFIELD**

-3 dB mid frequencies  
(400 Hz - 4 kHz)

**SPEECH**

HPF 100 Hz  
LPF 8 kHz

**XOVER**

HPF 100 Hz

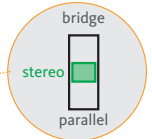
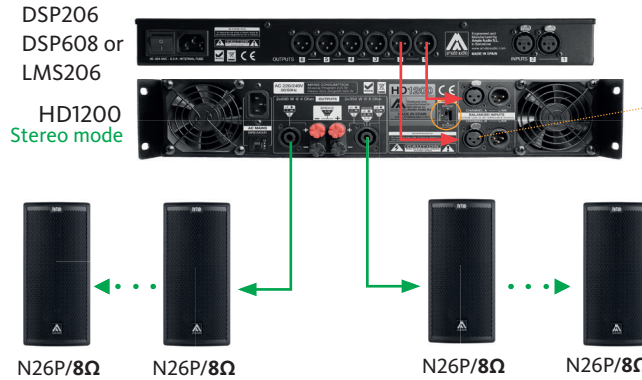
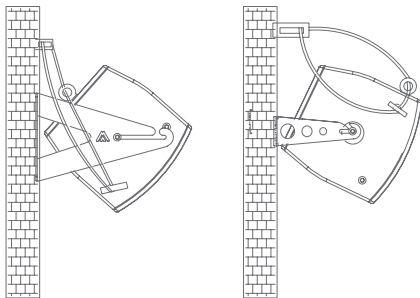
**RECOMMENDED CONFIGURATIONS**

**FOR N26P/8Ω (2 units)**  
Connect each output of the amplifier (LEFT/RIGHT) to each cabinet using two independent wires.

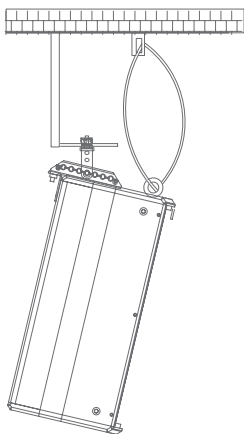
**FOR N26P/8Ω (4 units)**  
Connect the amplifier's output to the Speakon's input of the first cabinet. Then, make a bridge from the first cabinet to the second one. This configuration allows you to connect up to four cabinets to the same amplifier.

**FOR N26P/16Ω**  
Connect the amplifier's output to the Speakon's input of the first cabinet. Then, make a bridge from the first cabinet to the second one and thus, sequentially. This configuration allows you to connect up to eight cabinets to the same amplifier.

**HORIZONTAL WALL-MOUNT**  
UB-L + SC-15      SP-26N + SC-15

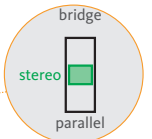
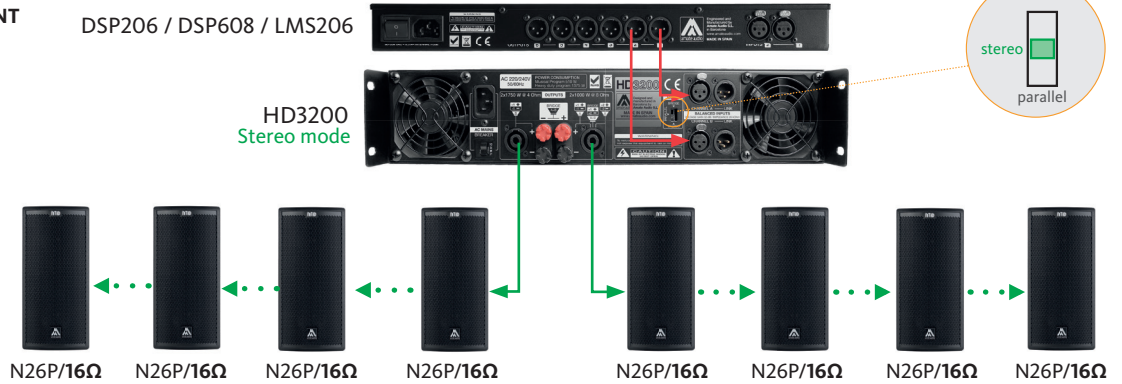


**VERTICAL COLUMN-MOUNT**  
HR-C + SC-15

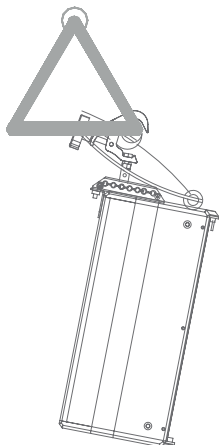


DSP206 / DSP608 / LMS206

HD3200  
Stereo mode



**VERTICAL TRUSS-MOUNT**  
HR-C/GT + SC-15



**ACCESSORIES**

**FLIGHT CASE**  
FC-N26  
for four units of N26P



**TRANSPORT COVER**  
NC-N26



**WALL MOUNT BRACKET**  
UB-L



**FLYING BAR**  
HR-C



**FLYING BAR WITH HOC**  
HR-C/GT



**TELESCOPIC DISTANCE ROD**  
SP-CRTL  
ø: 35 mm  
Length:  
55 cm ~ 90 cm  
Thread: M20



**SAFETY SLING**  
SC-15



**M8 RIGGING EYEBOLT**  
ACR-M8



**WALL MOUNT BRACKET**  
SP-26N

