

X15LTE

POINT SOURCE
15" 2-WAY
SPEAKER SYSTEM

Xcellence



Ultimate performance from a traditional two-way system.

X15LTE combines a 15-inch woofer with a Neodymium driver mounted on a proprietary horn design. It achieves long throw and high power levels, with a quality normally found in larger systems.

Sistema tradicional de dos vías llevado a la máxima expresión.

La combinación de un woofer de 15" y un motor de neodimio acoplado a una bocina de diseño propio, consigue unos niveles de potencia y calidad a largo alcance reservados a sistemas de mayores dimensiones.

X 15LTE

POINT SOURCE 15" 2-WAY SPEAKER SYSTEM

Xcellence



LONG
THROW



> 250 V
Overvoltage
Protection



WITH CWK-D



DSP STUDIO CONTROL APP
FOR IPAD & WINDOWS

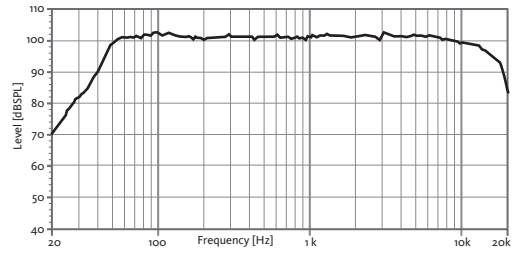
TECHNICAL FEATURES

X15LTE (ACTIVE)

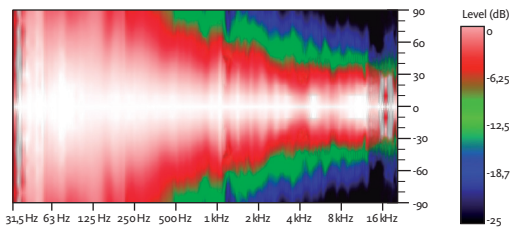
X15LTP (PASSIVE)

Amplifier (program power)	1000 W (LF) + 200 W (HF) Class D Bi-amplified	
Power (musical program)		2000 W
Input sensitivity	8 dBu – 1.94 V	99 dB (1 W / 1 m)
Input Impedance	20 kΩ Balanced	
Nominal Impedance		4 Ω
Mains	Universal Switch Mode Power Supply 85-265 V / 45-65 Hz	
Average current draw	1.3 A (Heavy duty musical program)	
SPL (1 m)	131 dB continuous, 134 dB Peak	
Built-in DSP	48 bit	
AD/DA converters	24 bit – 96 kHz	
Presets	FACTORY / NEARFIELD / LOUDNESS / SPEECH / XOVER + 23 configurable user memories	
Frequency response (-10 dB)	42 Hz – 19 kHz	42 Hz – 19 kHz *
Components	LF: 15" Neodymium woofer (3" voice coil) HF: 3" Titanium diaphragm Neodymium driver	
Directivity (HxV)	60° x 50° (rotatable horn)	
Weight	37.9 kg	34.9 kg
Finish	Multilayer Baltic birch plywood Front steel grille with grey micro-foam cloth High resistant black matt Polyurea paint	

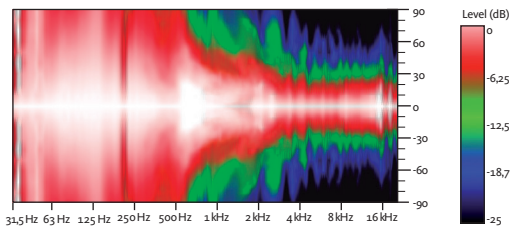
FREQUENCY RESPONSE 1w/1m (FACTORY PRESET)



HORIZONTAL COVERAGE, 0°



VERTICAL COVERAGE, 0°



* With external Master Audio DSP & HD3200 Amplifier



REAR VIEW

ACCESSORIES



FC-X15LTE



HR-1215



GT-50HR



SC-15X



ACR-M10



SP/CR



CWK-D