

X15T

HIGH PERFORMANCE
15" 2-WAY ACTIVE
SPEAKER SYSTEM

Xcellence



The well-known high-end two-way system by Amate Audio, now a step ahead! A new generation amplifier allows a more compact design, but even more powerful and lighter: performance normally found only in larger systems. The 60°x50° constant directivity horn makes it ideal for long coverage and clustering.

KEY FEATURES

TRANSDUCER TECHNOLOGY

Two-way active speaker system composed by one 3.5-inch voice coil, neodymium magnet, 15" loudspeaker and a 2.5" titanium diaphragm neodymium driver coupled to a 60° x 50° dispersion horn.

AMPLIFICATION

1500 W 3rd Generation Class D built-in amplifier, controlled by a dedicated DSP.

90% efficiency amplifier SMPS (switching mode power supply), allowing maximum power delivery with minimum consumption in an extremely low-weight and reduced size.

Rear connections and control panel with LCD screen to display the different settings, presets and adjustments done by the user. A capacitive keyboard guarantees the reliability of the system even under humidity and extreme weather conditions.

Exclusive and unique Overvoltage Protection which continuously monitors line voltage and instantly disconnects the system if the line voltage exceeds the maximum permissible level.

DSP & CONTROL

Internal DSP with all necessary signal processing (crossovers, EQs, delay, limiters, gain control, mute) as well as several useful presets to adjust X15T to different requirements.

Ethernet connection and full wireless control: the system can be monitored from any spot in the room.

DSPStudio® control software capable of adjusting and setting-up even the finest details and monitoring key parameters of the amplifier: input and output levels, clip limiter activation, amplifier temperature and network connection status.

DESIGN & ACCESSORIES

Several accessories allow easy flying. A 35 mm socket for mounting the loudspeaker on a speaker stand is provided at the bottom of the cabinet.

Ergonomic handles for an easy and comfortable transport.

Baltic birch plywood wooden cabinet with Polyurea® coating, offering maximum reliability and strength for touring as well as for high demanding applications.

X15T

HIGH PERFORMANCE
15" 2-WAY ACTIVE
SPEAKER SYSTEM

Xcellence

DSP STUDIO CONTROL APP
FOR IPAD & WINDOWS

WITH CWK-D

LONG
THROWLIGHT NEODYMIUM
COMPONENTS> 250 V
OVERVOLTAGE
PROTECTIONMULTIPLE PRESETS
AVAILABLEHIGH RESISTANT
POLYUREA® PAINTACCESSORIES FOR
EASY INSTALLATIONS

TECHNICAL FEATURES

Amplifier (program power)	1000 W (LF) + 500 W (HF) – Class D Bi-amplified
Input sensitivity	8 dBu – 1.94 V
Input Impedance	20 kΩ Balanced
Mains	Universal Switch Mode Power Supply 85-265 V / 45-65 Hz
Average current draw	2.1 A (Heavy duty musical program)
SPL (1 m)	131 dB continuous, 134 dB peak
Built-in DSP	48 bit
AD/DA converters	24 bit – 96 kHz
Presets	FLAT / NEARFIELD / NEARFIELD+ / SPEECH / XOVER + 23 configurable user memories
Crossover frequency	1k1Hz
Frequency response (-10 dB)	44 Hz – 19 kHz
Components LF HF	15" neodymium woofer (3.5" voice coil) 2.5" titanium diaphragm neodymium driver
Directivity (HxV)	60° x 50° (rotatable horn)
Directivity factor (Q)	20
Directivity index (DI)	13 dB
Weight	31.5 kg
Dimensions (HxWxD)	720 x 450 x 460 mm
Finish	Multilayer baltic birch plywood with high resistant black Polyurea® coating
Grille	1.5 mm steel with grey micro-foam cloth
Rigging	M8 points
Connectors	1x XLR input / 1x XLR link / 1x AC PowerCon input / 1x AC PowerCon link / 1x EtherCon RJ45 input / 1x EtherCon RJ45 link



TOP VIEW



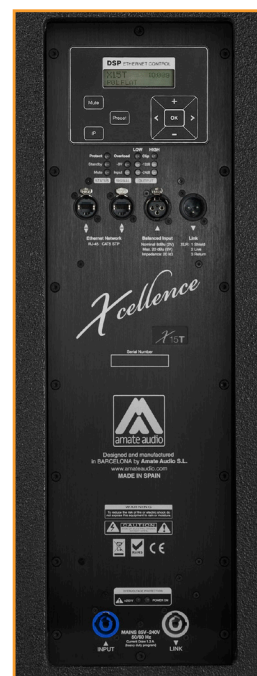
BOTTOM VIEW

FRONTAL VIEW
WITHOUT GRILLE

SIDE VIEW



REAR VIEW



CONNECTION PANEL

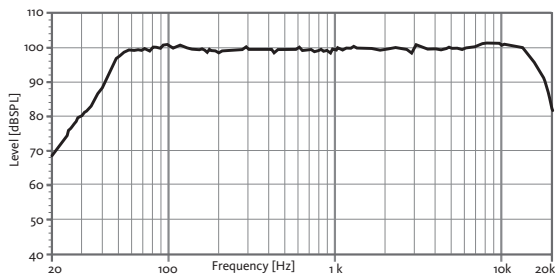
X15T

HIGH PERFORMANCE
15" 2-WAY ACTIVE
SPEAKER SYSTEM

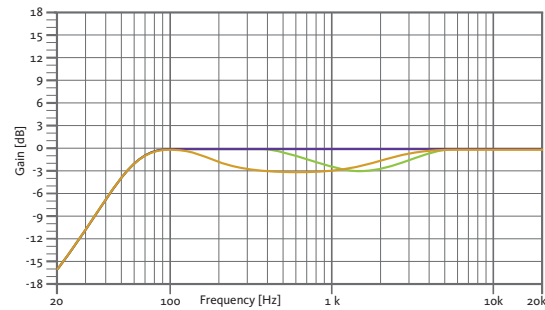
Xcellence



FREQUENCY RESPONSE 1w/1m (FLAT PRESET)



BUILT-IN PRESETS

**FLAT**

Flat response

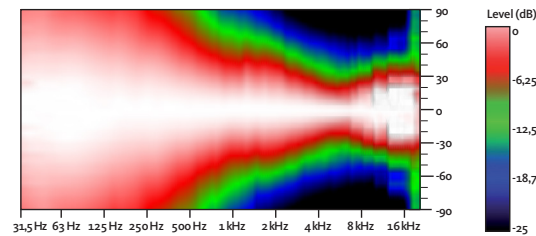
NEARFIELD-3 dB mid frequencies
(800 Hz – 3 kHz)**NEARFIELD+**-3 dB mid frequencies
(200 Hz – 3 kHz)**SPEECH**

-6 dB low / -6 dB high

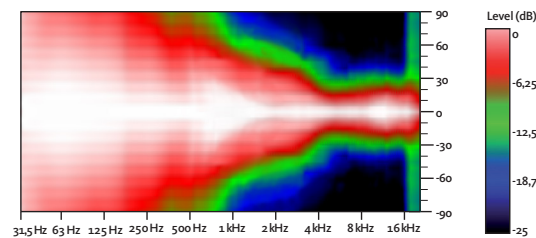
XOVER

HPF 100 Hz

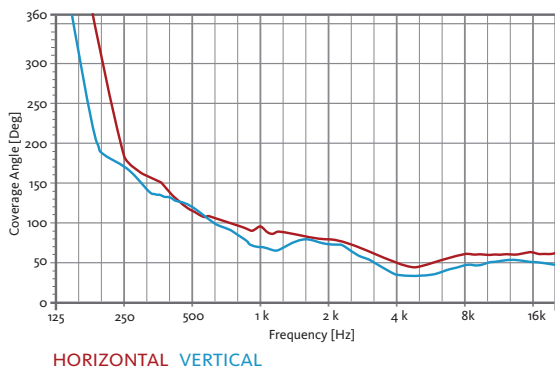
HORIZONTAL COVERAGE



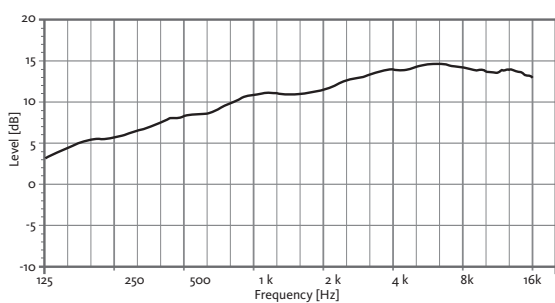
VERTICAL COVERAGE



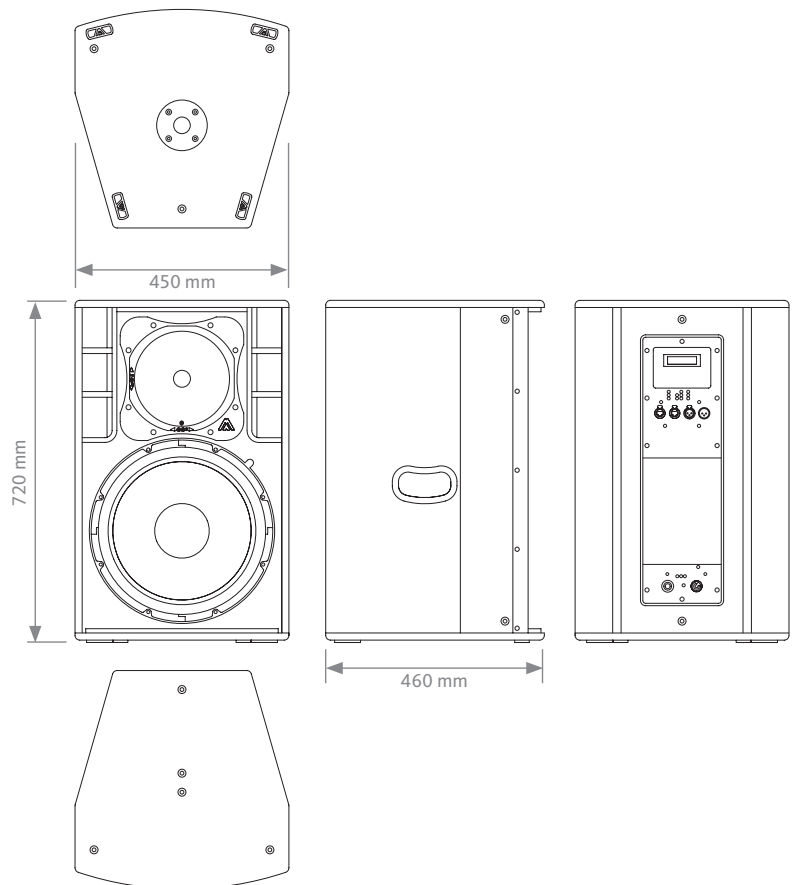
HORIZONTAL & VERTICAL BEAMWIDTH (-6dB point)



DIRECTIVITY INDEX (DI)



CAD DRAWING SCHEME



X15T

HIGH PERFORMANCE
15" 2-WAY ACTIVE
SPEAKER SYSTEM

Xcellence



ACCESSORIES

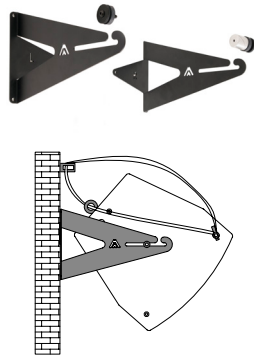
FLIGHT CASE

FC-X15T for two units of X15T



WALL MOUNT BRACKET

UB-L



FLYING BAR

HR-L



FLYING BAR WITH 50 mm HOOK

HR-L/GT



M8 RIGGING EYEBOLT

ACR-M8



SAFETY SLING

SC-15



DISTANCE ROD M20

SP-CRTL

Ø: 35 mm

Length: 55 cm ~ 90 cm

Thread: M20



WIRELESS COMMUNICATION KIT

CWK-D

Bespoke control protocol that supports Wi-Fi connectivity through CWK-D



DSP STUDIO CONTROL SOFTWARE

*"Instant access to outstanding sound"*

1

Configure your
wifi network

2

Detect
loudspeakers

3

Setup audio
settings

4

Enjoy the
best sound

The application utilises a bespoke control protocol that supports Wi-Fi connectivity (control over IP).

It allows to address the ethernet-enabled amp and DSP modules in the Xcellence series cabinets, affording the user visual feedback on amplifier status and the ability to edit processor values from any spot in the venue.

You can edit parameters such as crossover frequency, gain (per way and separately mutable), limiter, polarity, delay, five custom parametric EQs or an array of filter shapes, can all be adjusted in fine detail, with several elements controllable at the same time using grouping functions.

The app also provides comprehensive information about input and output levels, heat-sink temperature, clip and protection indicators.

iPad
VERSIONPC
VERSION

Download it from
our website:
www.amateaudio.com