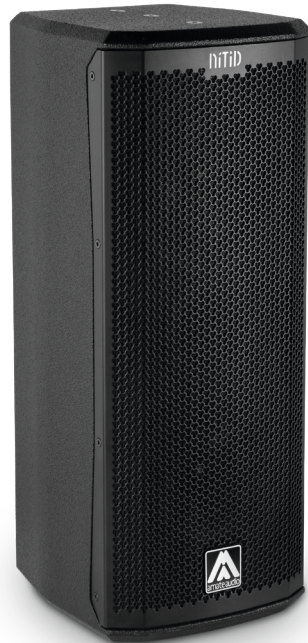


S26

2x 6" TWO-WAY ACTIVE
FULL-RANGE SPEAKER SYSTEM

Nítid-S



LIGHT
NEODYMIUM
COMPONENTS



CARBON FIBER
CONE



REAR PANEL
TOUCHSCREEN GUI
OPERATION



INTEGRATED POWER &
CONTROL WITH MULTIPLE
PRESETS



HIGH RESISTANCE
POLYUREA®
FINISH



EASY RIGGING &
INSTALLATION ACCESSORIES

Dual custom high-performance 6" carbon fiber drivers deliver incredible sound quality and a 121 dB continuous SPL output capability from this advanced ultra-compact, active self-powered loudspeaker system, providing extraordinary power levels and signal coverage from this discretely dimensioned loudspeaker.

KEY FEATURES

TRANSDUCER TECHNOLOGY

Two-way full range active loudspeaker system comprising two direct radiating 1.5-inch voice coil, neodymium magnet 6" loudspeakers and a 1-inch voice coil diameter, PEN diaphragm neodymium magnet compression driver loaded to a 70° x 70° dispersion horn.

AMPLIFICATION

Onboard 450 W 3rd generation Class bi-amplification.

Universal switch mode power supply (SMPS) with Power Factor Correction (PFC), allowing constant power delivery from 85 to 265 VAC input and high efficiency (>90%), with extremely compact lightweight form factor.

Automatic EcoMode low power consumption mode when no signal input present.

Connectors mounted on an inclined recessed moulded connector plate for improved security and environmental protection.

Double PowerCon® connectors (input & link).

ADVANCED DSP SYSTEM CONTROL

Onboard 64-bit precision DSP loudspeaker system control manages amplifier gain and cross-over settings, peak and thermal limiters and mutes. Includes adjustable 294 ms / 100 m delay line for extensive alignment delay and 5-band fully configurable

parametric EQ.

High-order FIR filtering ensures fully phase coherent PEQ adjustment and absolute phase alignment of common cabinet couplings.

Extensively R&D'd factory presets provide instantaneous system configuration for common applications, including point-source PA, speech and subwoofer coupling.

ALC (Adaptive Loudness Compensation) improves the listening experience when the system is used at low volume levels.

Operation and monitoring of system parameters, presets and user-adjustments is via Amate Audio's unique rear-panel 3.5" TFT colour touchscreen GUI. The front-panel Nítid backlit logo can be switched on or off, or set to indicate system limiting.

DESIGN & ACCESSORIES

Recessed ergonomic carry handle for easy handling.

Exclusive 1.5mm black mesh speaker grille with optimum perforation gradient and aesthetic appearance.

Multilayer birch plywood cabinet with Polyurea® coating for maximum robustness and strength, for touring, events production, venue installation and other highly demanding applications.

M8 rigging points for easy flying.

35mm diameter pole mount socket mounted on the bottom side, for a standard tripod.

S26

2x 6" TWO-WAY ACTIVE
FULL-RANGE SPEAKER SYSTEM

Nítid-S



TECHNICAL FEATURES

Amplifier (program)	400 W (LF) + 50 W (HF) Class D Bi-amplified	
Input sensitivity	8 dBu – 1.94 V	
Input Impedance	50 kΩ Balanced	
Mains	Universal Switch Mode Power Supply 85-265 V / 45-65 Hz	
Average current draw	1.2 A (Heavy duty musical program)	
SPL(1m)	121 dB musical program, 124 dB peak	
Built-in DSP	64-bit processing unit. Includes factory presets	
AD/DA converters	24 bit – 48 kHz	
Standby mode consumption	3.7 W @230VAC	
Adjustable delay line	294 ms / 100 m	
Crossover frequency	3k Hz	
Frequency response (-10dB)	58 Hz – 20 kHz	
Components	LF - MF	2x6" neodymium woofers with carbon fiber cone (1.5" voice coil)
	HF	1" PEN diaphragm neodymium magnet compression driver
Directivity (-6dB)	70° (H) x 70° (V)	
Directivity factor (Q)	12.6	
Directivity Index (DI)	11 dB	
Weight	10.6 Kg	
Dimensions (HxWxD)	572 x 230 x 250 mm	
Finish	Multilayer baltic birch plywood with high resistant black Polyurea® coating	
Grille	1.5mm powder coated steel with black acoustic mesh	
Rigging	M8 points	
Connectors	1x XLR input / 1x XLR link / 1x AC PowerCon® input / 1x AC PowerCon® link	
Available colors	Black and white	

TOUCHSCREEN CONTROL



Amate Audio's latest generation DSP System management is integrated with 3rd generation Class D amplification. Colour touchscreen operation and monitoring of DSP System includes access to powerful presets - engineered by Amate Audio R&D team – that instantly configure your Nítid loudspeaker for the majority of common application environments within seconds, prior to rigging or installation.



TOP VIEW



BOTTOM VIEW



SIDE VIEW



FRONT VIEW



REAR VIEW

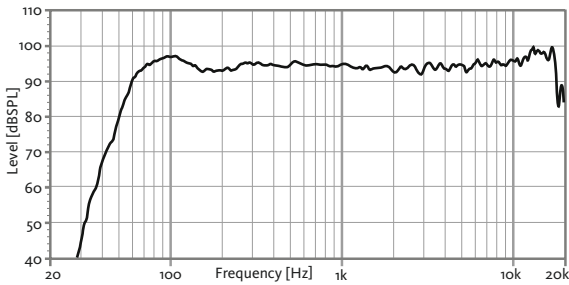
S26

2x 6" TWO-WAY ACTIVE
FULL-RANGE SPEAKER SYSTEM

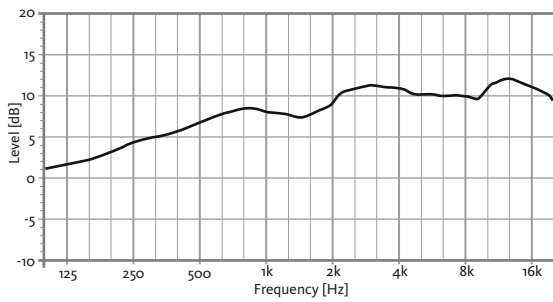
NiTiD-S



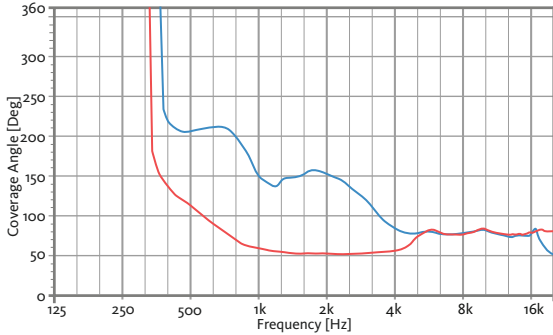
FREQUENCY RESPONSE 1w/1m (FLAT PRESET)



DIRECTIVITY INDEX (DI)

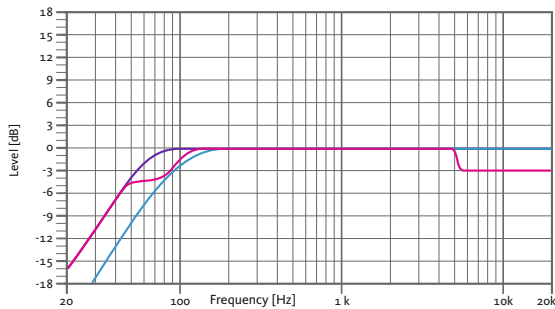


HORIZONTAL & VERTICAL BEAMWIDTH (-6dB point)



HORIZONTAL VERTICAL

BUILT-IN PRESETS

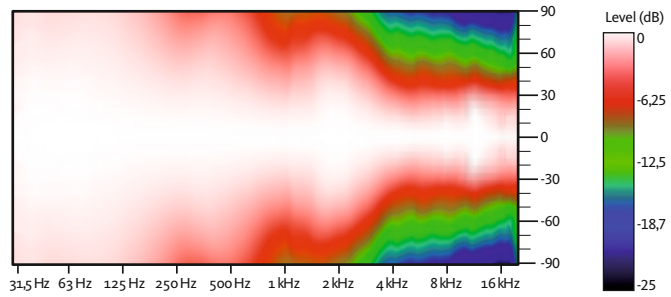


FLAT
Flat response

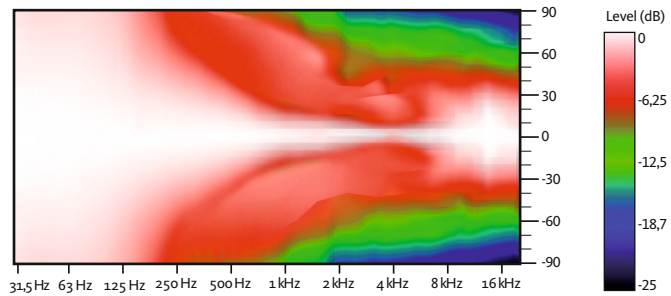
SPEECH
Vocal use

HPF90
HPF 90 Hz

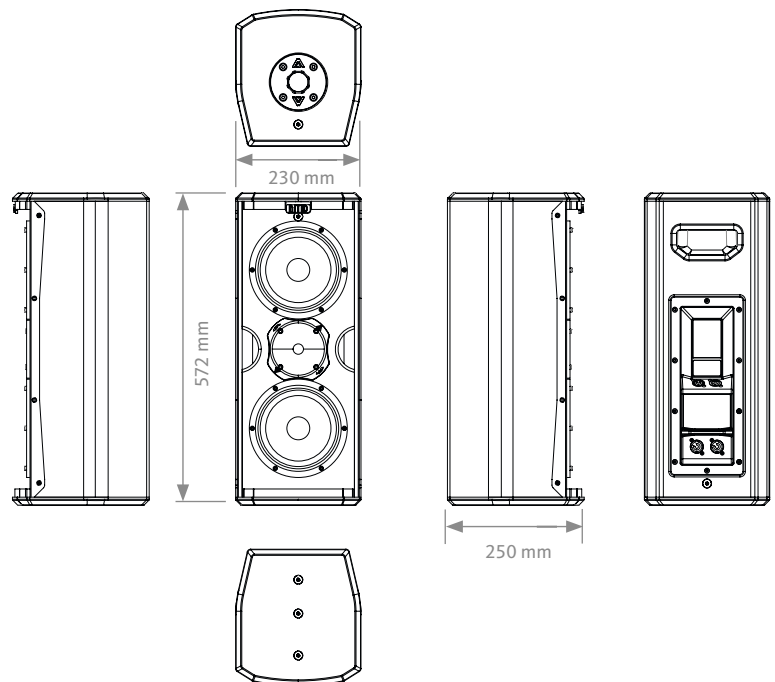
HORIZONTAL COVERAGE



VERTICAL COVERAGE



CAD DRAWING SCHEME



S26

2x 6" TWO-WAY ACTIVE
FULL-RANGE SPEAKER SYSTEM

Nítid-S



ACCESSORIES

TRANSPORT COVER
NC-S26



WALL-MOUNT BRACKET
SP-WHR



FLYING BAR
RB-S



FLYING BAR WITH HOOK
RB-S/GT



WALL MOUNT BRACKET
SP-S26



SAFETY SLING
SC-15



M8 RIGGING EYEBOLT
ACR-M8



WALL MOUNT BRACKET
UB-L



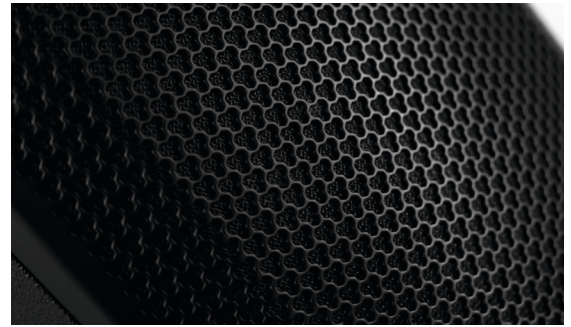
WALL MOUNT BRACKET
SP-6N



TELESCOPIC DISTANCE ROD
SP-CRTL
ø: 35 mm
Length:
55 cm ~ 90 cm
Thread: M20



DISCOVER NÍTID



UNIQUE DESIGN

New S-series models build on the success, innovation and best-in-class performance of the original Nítid designs with improved features including a recessed moulded connector plate, more highly stylised form factor and improved robustness of the world's most acoustically transparent pro-audio speaker grille.



THE PERFECT BALANCE

An ongoing programme of research and development ensures that Nítid series loudspeakers continue to achieve the highest levels of output and performance from the most compact sized designs, in an unrivalled synthesis of engineering and aesthetic form.

VERTICAL WALL-MOUNT
SP-WHR + SC-15

HORIZONTAL WALL-MOUNT
SP-S26 + SC-15

HORIZONTAL WALL-MOUNT
UB-L + SC-15

VERTICAL WALL-MOUNT
SP-6N + SC-15

VERTICAL COLUMN-MOUNT
RB-S + SC-15

VERTICAL TRUSS-MOUNT
RB-S/GT + SC-15

