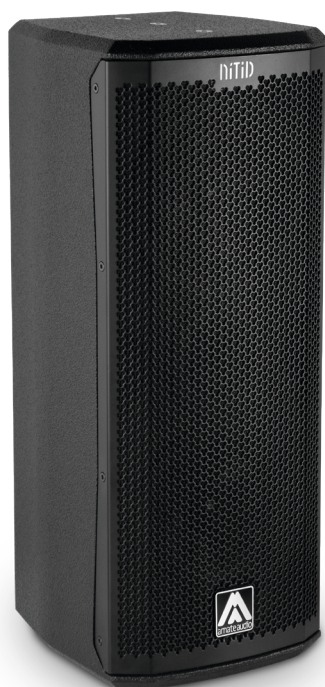


# S26P

2x 6" TWO-WAY PASSIVE  
FULL-RANGE SPEAKER SYSTEM

# nITiD-S



LIGHT  
NEODYMIUM  
COMPONENTS



CARBON FIBER  
CONE



DEDICATED CONTROL  
PRESETS with external  
Amate Audio DSP processors  
& processing amplifiers



HIGH RESISTANCE  
POLYUREA®  
FINISH



EASY RIGGING &  
INSTALLATION ACCESSORIES

Dual custom high-performance 6" carbon fiber drivers deliver incredible sound quality and a 121 dB continuous SPL output capability from this ultra-compact, passive loudspeaker system, providing extraordinary power levels and signal coverage from this discretely dimensioned loudspeaker.

## KEY FEATURES

### TRANSDUCER TECHNOLOGY

Two-way full range passive loudspeaker system comprising two direct radiating 1.5-inch voice coil, neodymium magnet 6" loudspeakers and a 1-inch voice coil diameter, PEN diaphragm neodymium magnet compression driver loaded to a 70° x 70° dispersion horn.

### POWER & CONTROL

400 W continuous musical program power handling.

An accurate internal passive crossover achieves optimum performance with high levels of protection for the high frequency driver.

Connectors mounted on an inclined recessed moulded connector plate for improved security and environmental protection.

Double Speakon NL4MP® (input & link).

Dedicated control presets available with Amate Audio LMS series DSP processors and TPD series processing amplifiers.

### DESIGN & ACCESSORIES

Recessed ergonomic carry handle for easy handling.

Exclusive 1.5mm black mesh speaker grille with optimum perforation gradient and aesthetic appearance.

Multilayer birch plywood cabinet with Polyurea® coating providing maximum robustness and strength for touring, events production, venue installation and other highly demanding applications.

M8 rigging points for easy flying.

35mm diameter pole mount socket mounted on the bottom side, for a standard tripod.

# S26P

2x 6" TWO-WAY PASSIVE  
FULL-RANGE SPEAKER SYSTEM

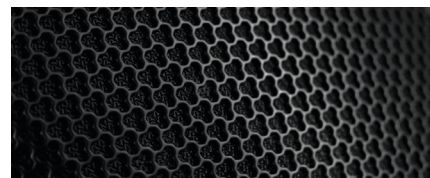
# NÍTiD-S



## TECHNICAL FEATURES

Power (musical program)	400 W
Power (r.m.s)	200 W
Nominal impedance	8 Ω or 16 Ω available
SPL(1W/1m)	95 dB
Maximum SPL (continuous/1m)	121 dB
Maximum SPL (peak/1m)	124 dB
Crossover frequency	3k4 Hz
Frequency response (-10dB)	62 Hz – 20 kHz
Components	LF - MF HF
	2x6" neodymium woofers with carbon fiber cone (1.5" voice coil) 1" PEN diaphragm neodymium magnet compression driver
Directivity (-6dB)	70° (H) x 70° (V)
Directivity factor (Q)	12.6
Directivity Index (DI)	11 dB
Weight	9.3 Kg
Finish	Multilayer birch plywood with high resistant black Polyurea® coating
Dimensions (H x W x D)	572 x 230 x 250 mm
Grille	1.5mm powder coated steel with black acoustic mesh
Rigging	M8 points
Connectors	1x Speakon NL4MP input / 1x Speakon NL4MP link
Available colors	Black and white

## DISCOVER NÍTiD



### UNIQUE DESIGN

New S-series models build on the success, innovation and best-in-class performance of the original NÍTiD designs with improved features including a recessed moulded connector plate, more highly stylised form factor and improved robustness of the world's most acoustically transparent pro-audio speaker grille.



### THE PERFECT BALANCE

An ongoing programme of research and development ensures that NÍTiD series loudspeakers continue to achieve the highest levels of output and performance from the most compact sized designs, in an unrivalled synthesis of engineering and aesthetic form.



TOP VIEW



BOTTOM VIEW



SIDE VIEW



FRONT VIEW



REAR VIEW

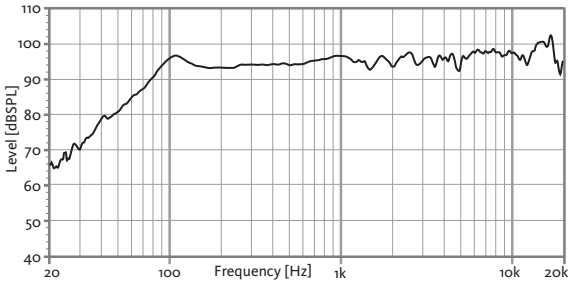
# S26P

2x 6" TWO-WAY PASSIVE  
FULL-RANGE SPEAKER SYSTEM

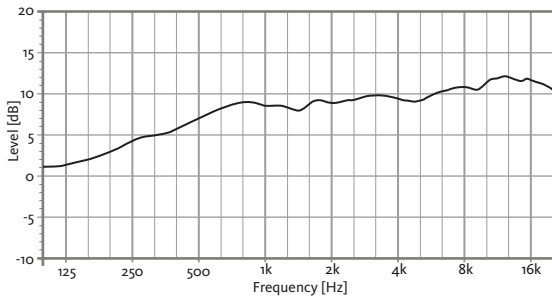
# NITID-S



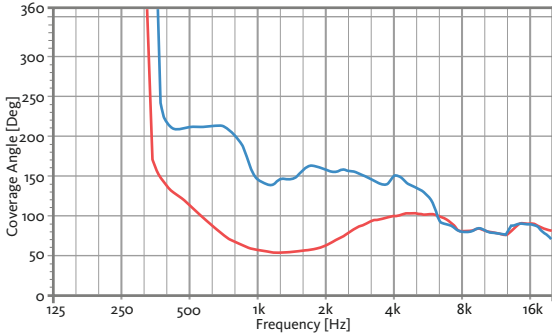
## FREQUENCY RESPONSE 1W/1m



## DIRECTIVITY INDEX (DI)

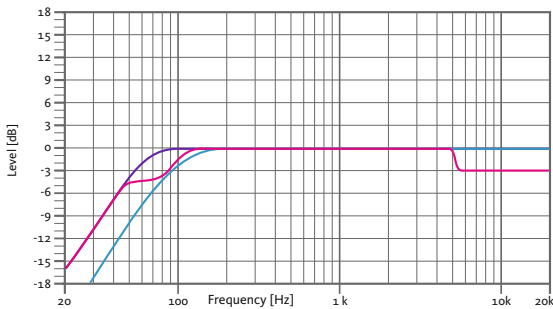


## HORIZONTAL & VERTICAL BEAMWIDTH (-6dB point)



HORIZONTAL VERTICAL

## RECOMMENDED PRESETS with external Amate Audio DSP

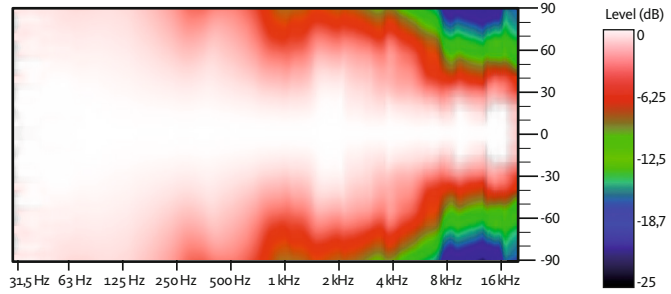


**FLAT**  
Flat response

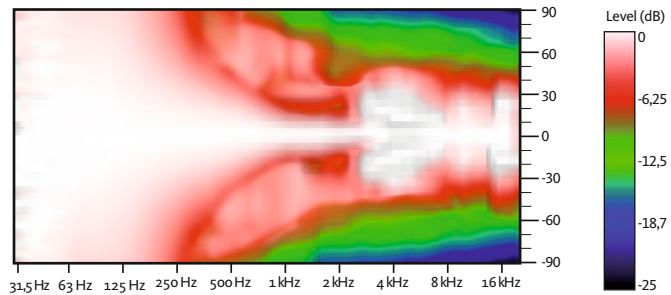
**SPEECH**  
Vocal use

**HPF90**  
HPF 90 Hz

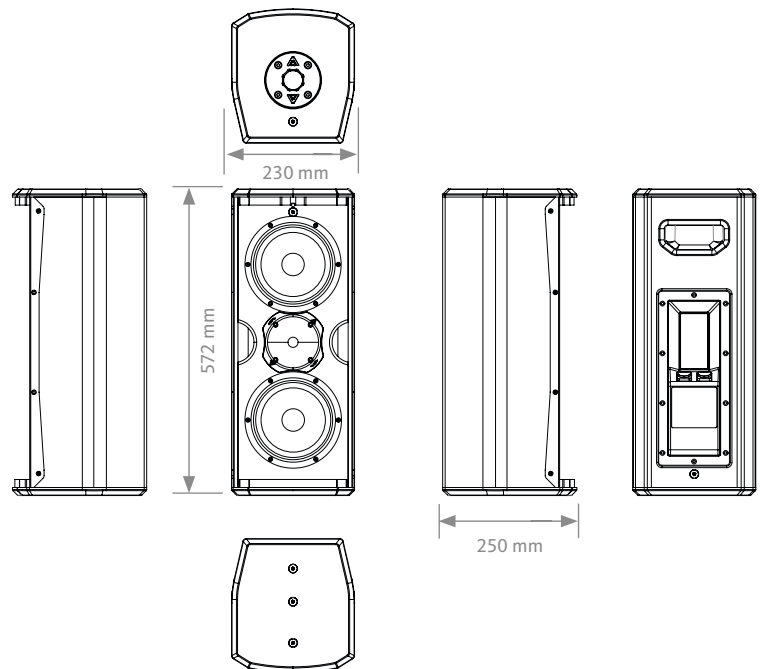
## HORIZONTAL COVERAGE



## VERTICAL COVERAGE



## CAD DRAWING SCHEME



# S26P

2x 6" TWO-WAY PASSIVE  
FULL-RANGE SPEAKER SYSTEM

# NITID-S

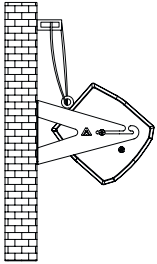


## RECOMMENDED CONFIGURATIONS

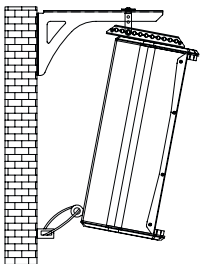
### FOR S26P/8Ω (2 units)

Connect each output of the amplifier (LEFT/RIGHT) to each cabinet using two independent wires.

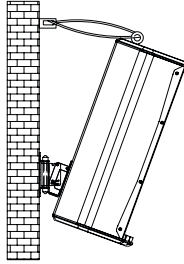
#### HORIZONTAL WALL-MOUNT UB-L + SC-15



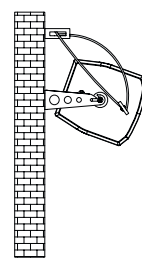
#### VERTICAL WALL-MOUNT SP-WHR + SC-15



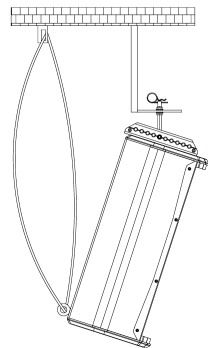
#### VERTICAL WALL-MOUNT SP-6N + SC-15



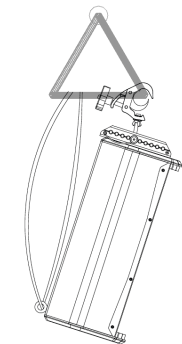
#### HORIZONTAL WALL-MOUNT SP-S26 + SC-15



#### VERTICAL COLUMN-MOUNT RB-S + SC-15



#### VERTICAL TRUSS-MOUNT RB-S/GT + SC-15



### FOR S26P/8Ω (4 units)

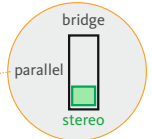
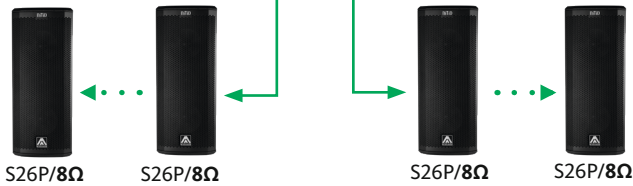
Connect the amplifier's output to the Speakon® input of the first cabinet. Then, make a bridge from the first cabinet to the second one. This configuration allows you to connect up to four cabinets to the same amplifier.

### FOR S26P/16Ω

Connect the amplifier's output to the Speakon® input of the first cabinet. Then, make a bridge from the first cabinet to the second one and thus, sequentially. This configuration allows you to connect up to eight cabinets to the same amplifier.

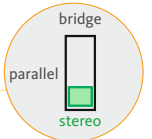
LMS206 / LMS608

HD1200  
Stereo mode



LMS206 / LMS608

HD3200  
Stereo mode



## ACCESSORIES

### TRANSPORT COVER NC-S26



### WALL MOUNT BRACKET UB-L



### WALL-MOUNT BRACKET SP-WHR



### FLYING BAR RB-S



### FLYING BAR WITH HOOK RB-S/GT



### TELESCOPIC DISTANCE ROD SP-CRTL

ø: 35 mm  
Length:  
55 cm ~ 90 cm  
Thread: M20



### WALL MOUNT BRACKET SP-S26



### SAFETY SLING SC-15



### M8 RIGGING EYEBOLT ACR-M8



### WALL MOUNT BRACKET SP-6N

